

PEEL WOMEN & JUNIOR TOUR 2018

AT KWINANA MOTORPLEX

INFORMATION PACK

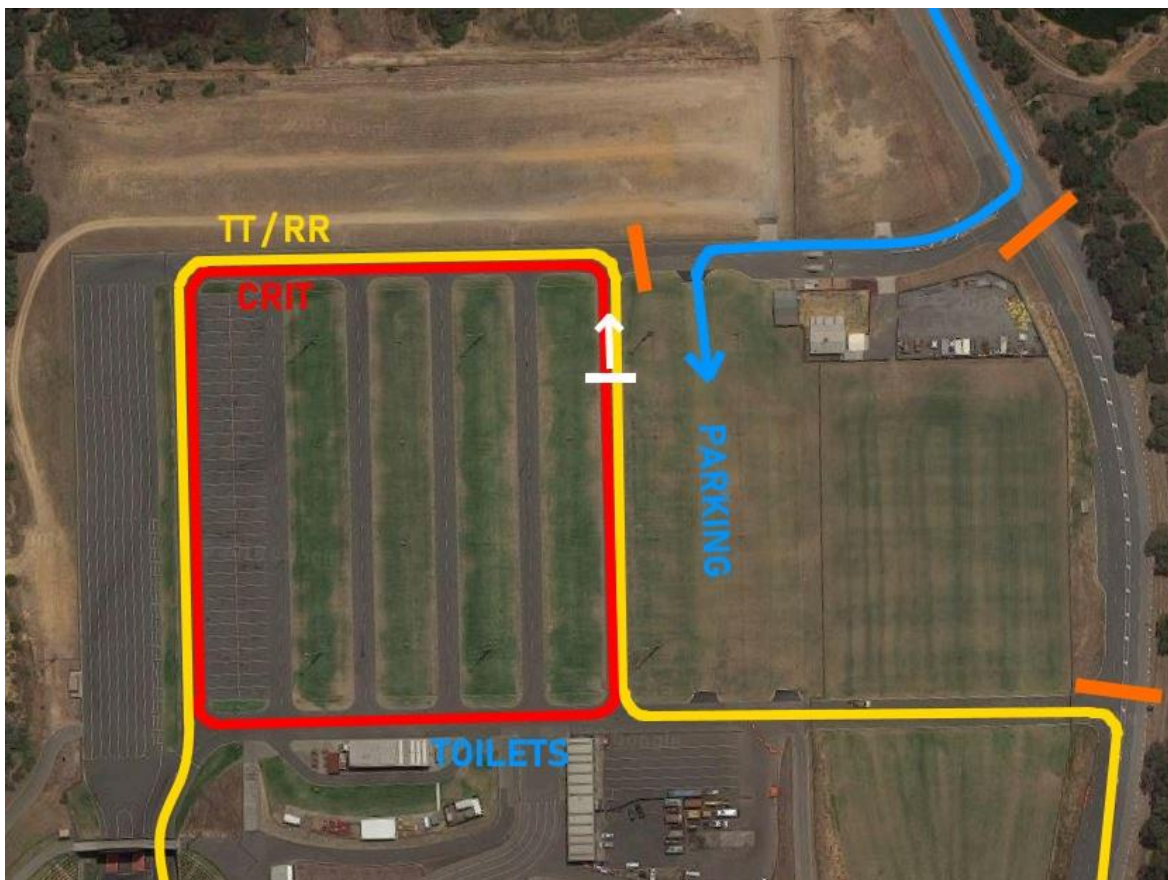
WELCOME

Thankyou for being a part of the Peel Tour for 2018!

This year will be the fifth time holding the event at the Kwinana Motorplex. Most cycling clubs will know the pain of increasing vehicular traffic, and the dangers this presents to our competitors. The Motorplex offers the opportunity for racers to compete without the worries of traffic, and the added burden of organised traffic control.

Peel is proud to offer this event to all Women and Juniors, groups which are not always catered to when mixed with Men's grades. We hope that the day encourages them to seek out more awesome racing in WA!

See you Sunday – Mark Glorie PDCC Race Director.



PARKING

The entry gate to Kwinana Motorplex, off Anketell Road, will not be open until 8:00 AM. Once through the gate proceed to the right and through the toll-booths.

Ample parking is available on the grassed area as marked on the map. Please do not park in the Western-most area (near Registration and Finish Line).

This shouldn't need mentioning, but please be cautious when parking as competitors may be using the area to warm up.

REGISTRATION

Once you arrive please proceed to the Registration desk, where we can take your license and give you your race numbers and timing chip. We will also need a Commissaire to check your rollout distance (juniors) and equipment, like clip-on TT bars, helmet, and wheels at this time.

RACE NUMBERS AND TIMING CHIP

Your race number needs to be placed on the RIGHT of your jersey, in the pocket or flank area.

Your timing chip needs to be placed on your fork. Plastic ties are available at the registration tent.

TENTS

The grassed area near the finish offers good views as all events finish within view of this area. Feel free to erect tents as there is no shade or shelter available.

Please keep a 10 metre clearance of the finish line, especially bikes with timing chips attached, as they will be detected by the timing system and make the lives of the operators difficult.

TOILETS

Full toilet and change room facilities are available in the block across from the registration tent. Please watch for ongoing races when crossing the road, as it forms part of the course.

FOOD

A coffee van will be available for hot drinks, and a sausage sizzle if you need a feed station. Both of which will be near the registration tent. Again, please watch for racers when crossing the circuit. Additionally, there is a service station 2 minutes North on the corner of Rockingham Rd and Lee Rd.

PROLOGUE TIME TRIAL

Time Trials start on the Finish Line and complete one full lap of the course. Please assemble near the starting corral 5 minutes prior to your start time, as missing your start block may attract TIME PENALTIES or DISQUALIFICATION.

Time Trial bikes or clip-on bars are allowed, however they must adhere to all rules and restrictions. We recommend a road bike as the course is short and technical.

ROAD RACE

The Road Race uses the same course, which includes some complex corners and narrow sections. So exercise caution when bunch riding. Please assemble at the registration tent 10 minutes prior to your start time for a race briefing.

Race start may be neutralized behind a pace vehicle, and you will receive a bell for your final lap.

CRITERIUM

The final event will be a short 5 minute criterium per grade, on a square 600m circuit.

PRESENTATIONS

The presentation ceremony will commence after the judges have decided on the final race, at approximately 4PM.

START TIMES

8:00am Gates Open

8:30am Rego/Course Open

9:00am Prologue TT 1 lap (3.3km)

10:00am U13/U15 Road Races U13 – 5 laps (16.5km)
U15 – 8 laps (26.4km)

10:45am Women C/D Road Races C – 10 laps (33km)
D – 8 laps (26.4km)

11:45am U17 Road Races U17M – 15 laps (49.5km)
U17W – 10 laps (33km)

1:00pm Women A/B Road Races A – 15 laps (49.5km)
B – 12 laps (39.6km)

2:30pm Sprint Criteriums 5 mins per grade

4:00pm Presentations

COURSE MAP

