



**AUSCYCLING**  
**WA**

**STATE CRITERIUM CHAMPIONSHIP**  
**SUNDAY MARCH 21ST**  
**ALUMINA WAY ROCKINGHAM**

**JUNIORS - MASTERS - OPEN**



## Registration Open from 6.30am

Once you arrive please proceed to the Registration desk on the grass in Alumina Rd. Your license will be checked electronically prior to the race via Entryboss prior to the event. If your license cannot be verified, you will be unable to race. Please respond to emails with questions regarding your license.

## Juniors

Juniors will require to conduct the roll out prior to registration. When you complete your roll out, the commissaire will give you a card to present to the registration desk. You will not be able to register without this card. The roll out will be placed across the road from the registration desk

## Race Numbers and Timing Chip

Your race numbers need to be placed on the RIGHT and CENTER of your jersey, in the pocket and flank area. This aids in rider identification during the race and at the finish line, in case your timing chip fails.

Your timing chip needs to be placed on your front fork.

Remember to return your numbers and chip after the conclusion of your race, failure to do so may incur the cost of equipment replacement.

## Race Safety

A couple points we would like to go over, and will be repeated during your race briefing:



- The race course is on open roads, and as such there MAY be vehicle on the course from time to time. Competitors are reminded that they must keep to the left side of the road **AT ALL TIMES**.
- There will more than likely be a TRUCK MOVEMENT during the racing day. We will manage this closely, but you will be required to GIVE WAY and follow all instructions from race officials.



## Race Format

- Grades will be briefed and released from Alumina Rd.
- The race event will be for a specific time period, plus 2 laps (except for U13)
  - a "2" sign will be shown with 2 laps to go.
  - a Bell will ring signalling the start of the final lap.
- Do not interact with other grades if you are passing or being passed. Commissaires may need to neutralize grades if they do not accomplish this themselves.
- If you are sitting in or are taking advantage of another grade, you will be disqualified from the result.
- Senior races will be conducted in a 10 year age group categories.
- There will be 2 Events on the course at the same time, with the exception of the open event.

## Toilets

Portable toilets are found on the corner of Alumina Rd and Zirconia Dr. Please ensure you use them!

## Presentations

The presentation ceremony will be conducted throughout the day for competitors. A final presentation will be conducted after the Men's Open Event.

## Start Times

The following start times are approximate: they may change depending on entry numbers.

## JUNIOR Schedule

Start Time	Grade	Boys Duration	Girls Duration
7.00am	U13 Boys and Girls	15 min + 1 lap	10 Min + 1 Lap
7.20am	U15 Boys and Girls	20 min + 2 laps	25 Min + 2 Laps
7.45am	U17 Boys and Girls	25 min + 2 laps	20 Min + 2 Laps
8.30am	U19 Boys and Girls	30 min + 2 laps	25 Min + 2 Laps

## SENIOR Schedule

Start Time	Grade	Duration
9.05am	40-49 Men	35 Min + 2 Laps
9.05am	30-39 Men	40 Min + 2 Laps
9.50am	40-49 Women	30 Min + 2 Laps
9.50am	30-39 Women	35 Min + 2 Laps
10.30am	60+ Men	30 Min + 2 Laps
10.30am	50-59 Men	35min + 2 Laps
11.10am	60+ Women	25min + 2 Laps
11.10am	50-59 Women	30min + 2 Laps
11.45am	OPEN Women	50 Min + 2 Laps
12.40pm	OPEN Men	60 Min + 2 Laps
1.45pm	Presentations	Packup

## **Vehicles**

Competitor vehicles ARE NOT ALLOWED on the race course at any time

## **Parking**

Parking will be along the verge of Paterson Rd. There will be no parking on the course. Please follow the marshal instructions when parking your vehicle.

## **First Aid**

St John Ambulance will be on site on the corner of Alumina Rd and Zirconia Dr for any cuts or scrapes.

## **Water**

Free water is available from the Kitchen in the registration desk, and refreshments will be available for purchase

## **Volunteers**

We cannot run these events without the wonderful support of our Volunteers. When you are on course, please acknowledge their support in some way. They allow us to race.

## **Team / Club Marquees**

Must comply with City of Rockingham standards. Must not be more than 3m X 3m in area, and will need to be weighted down appropriately. You may not be able to use pegs. If marques are not erected correctly, or pose a danger, you will be requested to remove it.

## **Protests**

Any protest is to be made directly to the Commissaires on the day in writing as soon as practical after the completion of the event.

## **Photography**

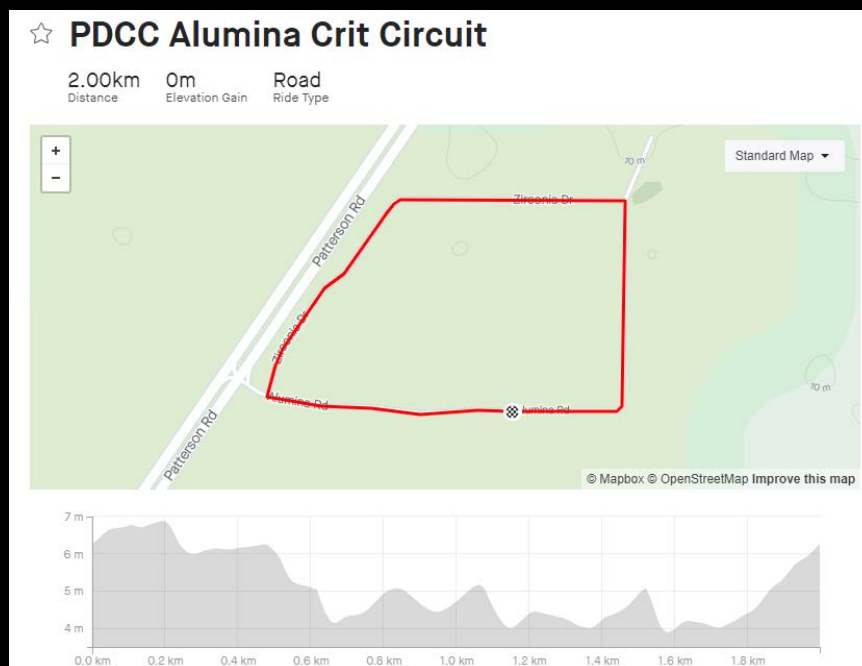
NO DRONES are allowed to be flown anywhere near, or above the competitors.

Please ensure all other photography is conducted in a safe manner, and all photographers are off the course at all times. (not on the road)

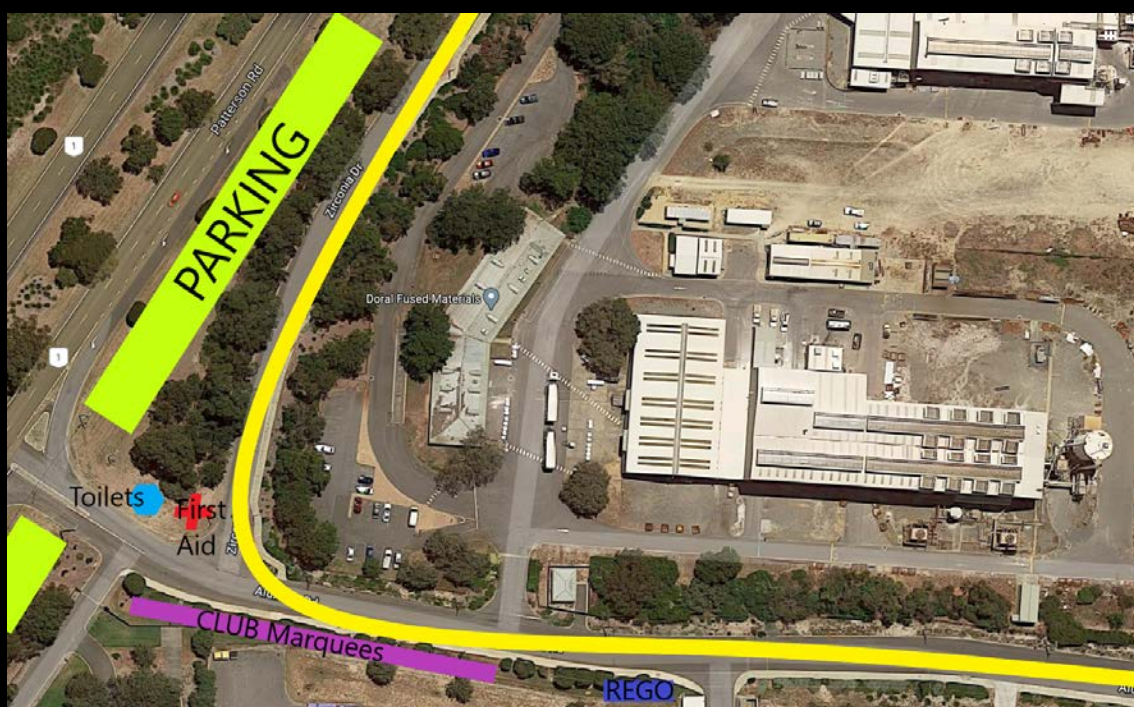


## Course Map

The course runs along Alumina Rd, turns left into Zirconia Dr, then turns left into Alumina Rd. The warm up area is to the north of the course, along Alumina Rd. Access is via Patterson rd.



## Event Village Map



Brought to you by your local cycling clubs.



**roueschaudes**  
cycling club



**AUSCYCLING**  
**WA**